

# LOT 94

## 329 O'TOOLE CRES



# The Homewood

### SOLD

Elevation B

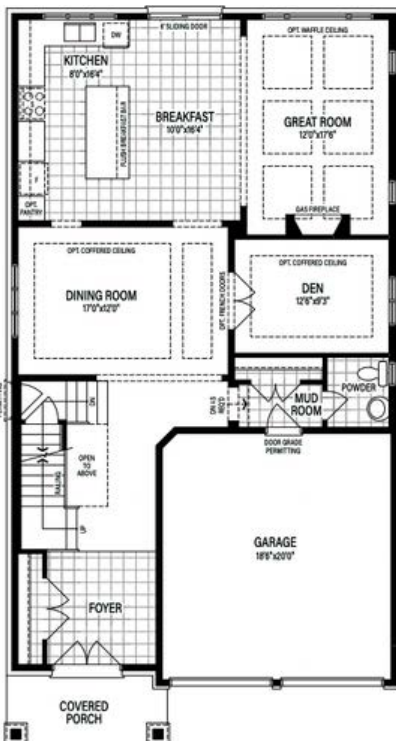
40' Lot

3013 sq.ft.



### INCLUDED UPGRADED FEATURES:

- SEPARATE SIDE ENTRANCE UPGRADE
- STAINED HARDWOOD ON THE MAIN FLOOR & NATURAL FINISH OAK STAIRS\*
- QUARTZ COUNTERTOP IN KITCHEN
- SPA-INSPIRED MASTER ENSUITE
- 5TH BEDROOM UPGRADE
- GAS FIREPLACE
- AIR CONDITIONING



### Flexible Closing Date

[SALES@LIVENATURESEGE.COM](mailto:SALES@LIVENATURESEGE.COM)

705-243-3710

All upgraded features as per plan. See Sales Representative for full details. Prices, terms and conditions subject to change without notice. E & O.E.

\*Hardwood on Main Floor except tiled areas. Oak Stairs to finished areas only.

# LOT 116

## 620 RAMSAY ROAD



# The Westridge

# SOLD

Elevation C

40' Corner Lot

3008 sq.ft.



### INCLUDED UPGRADED FEATURES:

- 9FT CEILINGS ON MAIN FLOOR
- HARDWOOD ON THE MAIN FLOOR & NATURAL FINISH OAK STAIRS\*
- WATER LINE ROUGH IN FOR FUTURE FRIDGE
- 6 LED POT LIGHTS IN KITCHEN
- 3 PENDANT LIGHTS OVER KITCHEN ISLAND
- 6 LED POT LIGHTS IN GREAT ROOM
- SPA-INSPIRED ENSUITE IN MASTER
- DOUBLE SINK IN SHARED ENSUITE
- GAS FIREPLACE & AIR CONDITIONING



[SALES@LIVENATURESEGE.COM](mailto:SALES@LIVENATURESEGE.COM)

705-243-3710

All upgraded features as per plan. See Sales Representative for full details. Prices, terms and conditions subject to change without notice. E & O.E.

\*Hardwood on Main Floor except tiled areas. Oak Stairs to finished areas only.

# LOT 114

## 628 RAMSAY ROAD



# The Sherbrooke

## Available

Elevation B

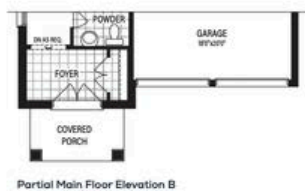
40' Bungalow Lot

1664 sq.ft.



### INCLUDED UPGRADED FEATURES:

- HARDWOOD FLOORING ON MAIN FLOOR
- POT LIGHTS IN KITCHEN, GREAT ROOM, BREAKFAST AREA & MAIN HALLWAY
- CUSTOM DESIGNED KITCHEN CABINETS WITH TALLER UPPERS
- STAINLESS STEEL DOUBLE BOWL KITCHEN SINK WITH SINGLE LEVER PULLOUT FAUCET.
- TRAY CEILING IN MASTER BEDROOM
- GAS FIREPLACE
- AIR CONDITIONING



### Flexible Closing Date

[SALES@LIVENATURESEGE.COM](mailto:SALES@LIVENATURESEGE.COM)

705-243-3710

All upgraded features as per plan. See Sales Representative for full details. Prices, terms and conditions subject to change without notice. E & O.E.

\*Hardwood on Main Floor except tiled areas. Oak Stairs to finished areas only.

# LOT 135-6

## 736 CARPENTER TRAIL



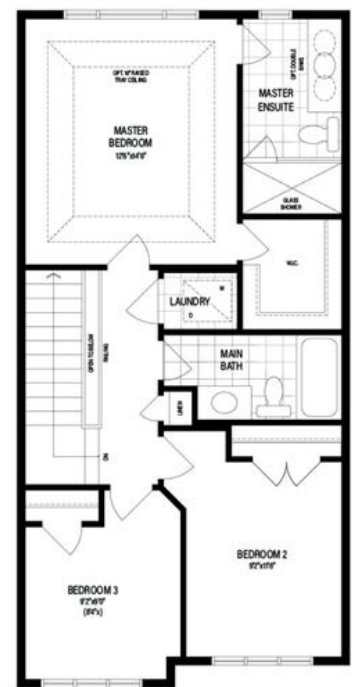
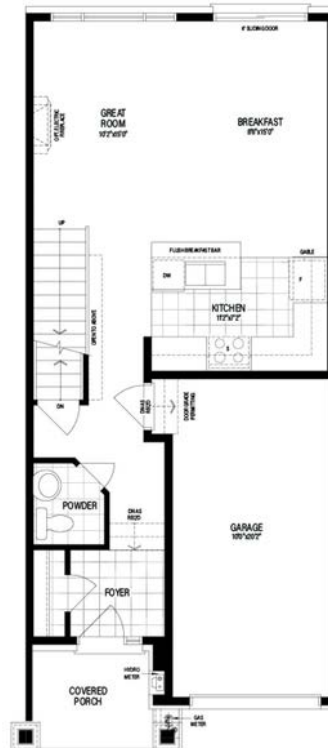
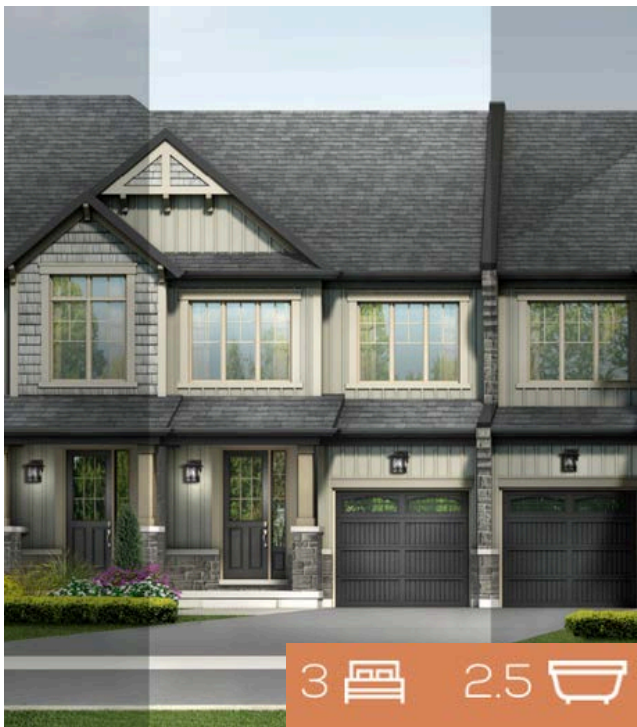
# The Highland

## Available

Elevation A

Interior Townhome

1385 sq.ft.



### INCLUDED UPGRADED FEATURES:

- SMOOTH CEILINGS THROUGHOUT
- 7 1/4" LAMINATE FLOORING ON MAIN LEVEL
- NATURAL FINISH OAK STAIRCASE
- GRANITE/QUARTZ COUNTERTOPS IN KITCHEN
- DELUXE KITCHEN CABINETRY WITH TALLER UPPERS
- SPA-INSPIRED MASTER ENSUITE WITH FREESTANDING SOAKER TUB & QUARTZ COUNTERTOP
- WALK OUT ON DECK
- LARGER BASEMENT WINDOWS AT REAR
- APPROX. 5' X 7' DECK OFF MAIN FLOOR WITH STEPS TO GRADE\*



## Flexible Closing Date

[SALES@LIVENATURESEGE.COM](mailto:SALES@LIVENATURESEGE.COM)

705-243-3710

All upgraded features as per plan. See Sales Representative for full details. Prices, terms and conditions subject to change without notice. E & O.E. Price includes lot premium. \*Deck size may vary.

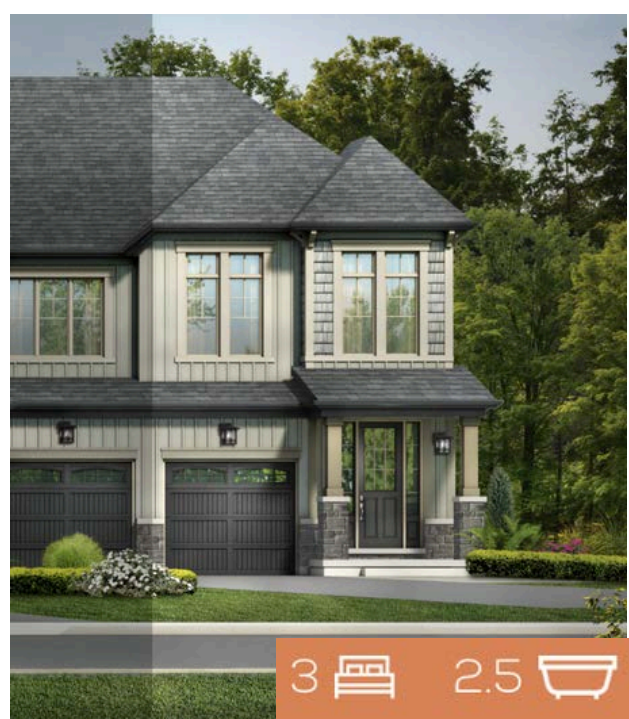
**LOT 135-8**  
**732 CARPENTER TRAIL**



# The Spillsbury

**SOLD**

Elevation A      End Unit Townhome      1863 sq.ft.



3 2.5



**INCLUDED UPGRADED FEATURES:**

- SMOOTH CEILINGS THROUGHOUT
- 7 1/4" LAMINATE FLOORING ON MAIN LEVEL
- NATURAL FINISH OAK STAIRCASE
- DELUXE KITCHEN CABINETRY WITH TALLER UPPERS
- GRANITE/QUARTZ COUNTERTOPS IN KITCHEN
- SPA-INSPIRED MASTER ENSUITE WITH FREESTANDING SOAKER TUB & QUARTZ COUNTERTOP
- LOOK OUT BASEMENT
- LARGER BASEMENT WINDOWS AT REAR
- APPROX. 5' X 7' DECK OFF MAIN FLOOR WITH STEPS TO GRADE\*



**Flexible Closing Date**

**[SALES@LIVENATURESEGE.COM](mailto:SALES@LIVENATURESEGE.COM)**

**705-243-3710**

All upgraded features as per plan. See Sales Representative for full details. Prices, terms and conditions subject to change without notice. E & O.E. Price includes lot premium. \*Deck size may vary.

**LOT 128-2**  
**145 PIKE STREET**



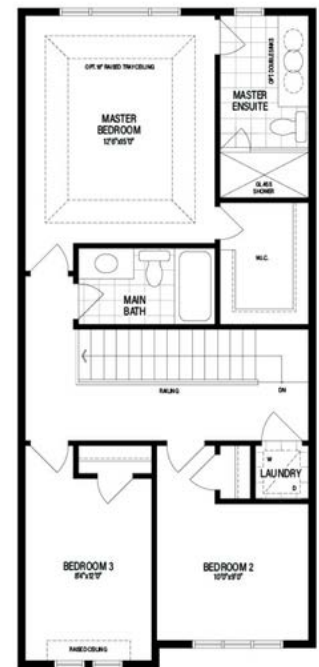
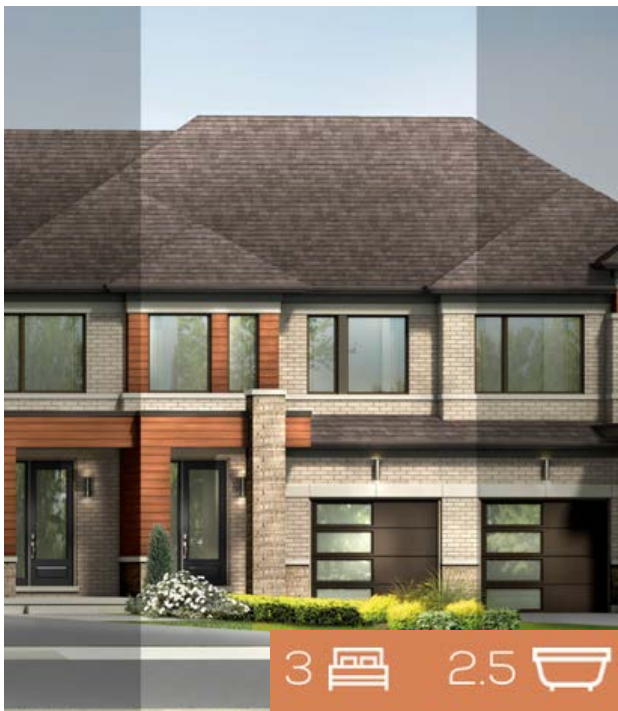
# The Carnegie

**Available**

Elevation C

Interior Townhome

1564 sq.ft.



**INCLUDED UPGRADED FEATURES:**

- 9FT CEILINGS ON MAIN FLOOR
- 7 1/4" LAMINATE FLOORING ON MAIN FLOOR
- KITCHEN ISLAND LIGHT CENTERED ON A SEPARATE SWITCH
- 3 LED POT LIGHTS IN KITCHEN
- 4 LED POT LIGHTS IN GREAT ROOM
- DOUBLE SINKS IN MASTER ENSUITE
- 200 AMP ELECTRICAL SERVICE



**Flexible Closing Date**

[SALES@LIVENATURESEGE.COM](mailto:SALES@LIVENATURESEGE.COM)

**705-243-3710**

All upgraded features as per plan. See Sales Representative for full details. Prices, terms and conditions subject to change without notice. E & O.E. \*Hardwood on Main Floor except tiled areas. \*Oak Stairs to finished areas only.