

# LOT 94

## 329 O'TOOLE CRES



# The Homewood

## \$944,990

Elevation B

40' Lot

3013 sq.ft.



### INCLUDED UPGRADED FEATURES:

- 9FT CEILINGS ON MAIN FLOOR
- STAINED HARDWOOD ON THE MAIN FLOOR & NATURAL FINISH OAK STAIRS\*
- QUARTZ COUNTERTOP IN KITCHEN
- SPA-INSPIRED MASTER ENSUITE
- 5TH BEDROOM UPGRADE
- GAS FIREPLACE
- AIR CONDITIONING



### Flexible Closing Date

[SALES@LIVENATURESEGE.COM](mailto:SALES@LIVENATURESEGE.COM)

705-243-3710

All upgraded features as per plan. See Sales Representative for full details. Prices, terms and conditions subject to change without notice. E & O.E.

\*Hardwood on Main Floor except tiled areas. Oak Stairs to finished areas only.

# LOT 116

## 620 RAMSAY ROAD



# The Westridge

## \$970,990

Elevation C

40' Corner Lot

3008 sq.ft.



### INCLUDED UPGRADED FEATURES:

- 9FT CEILINGS ON MAIN FLOOR
- HARDWOOD ON THE MAIN FLOOR & NATURAL FINISH OAK STAIRS\*
- WATER LINE ROUGH IN FOR FUTURE FRIDGE
- 6 LED POT LIGHTS IN KITCHEN
- 3 PENDANT LIGHTS OVER KITCHEN ISLAND
- 6 LED POT LIGHTS IN GREAT ROOM
- SPA-INSPIRED ENSUITE IN MASTER
- DOUBLE SINK IN 2<sup>ND</sup> ENSUITE
- GAS FIREPLACE & AIR CONDITIONING



### Flexible Closing Date

[SALES@LIVENATURESEGE.COM](mailto:SALES@LIVENATURESEGE.COM)

705-243-3710

All upgraded features as per plan. See Sales Representative for full details. Prices, terms and conditions subject to change without notice. E & O.E.

\*Hardwood on Main Floor except tiled areas. Oak Stairs to finished areas only.



# LOT 135-6

## 736 CARPENTER TRAIL



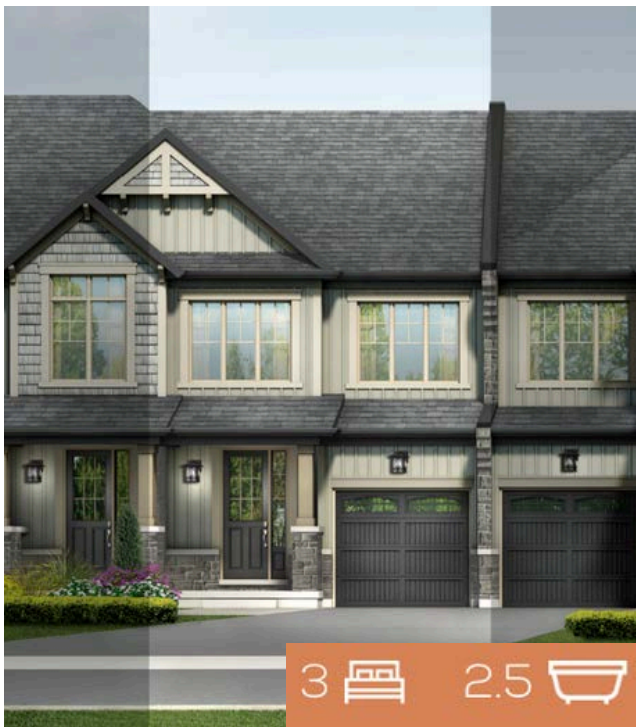
# The Highland

## \$617,945

Elevation A

Interior Townhome

1385 sq.ft.



### INCLUDED UPGRADED FEATURES:

- SMOOTH CEILINGS THROUGHOUT
- 7 1/4" LAMINATE FLOORING ON MAIN LEVEL
- NATURAL FINISH OAK STAIRCASE
- GRANITE/QUARTZ COUNTERTOPS IN KITCHEN
- DELUXE KITCHEN CABINETRY WITH TALLER UPERS
- SPA-INSPIRED MASTER ENSUITE WITH FREESTANDING SOAKER TUB & QUARTZ COUNTERTOP
- LOOK OUT BASEMENT
- LARGER BASEMENT WINDOWS AT REAR
- APPROX. 5' X 7' DECK OFF MAIN FLOOR WITH STEPS TO GRADE\*



## Flexible Closing Date

[SALES@LIVENATURESEGE.COM](mailto:SALES@LIVENATURESEGE.COM)

705-243-3710

All upgraded features as per plan. See Sales Representative for full details. Prices, terms and conditions subject to change without notice. E & O.E.  
Price includes lot premium. \*Deck size may vary.

# LOT 135-8

## 732 CARPENTER TRAIL



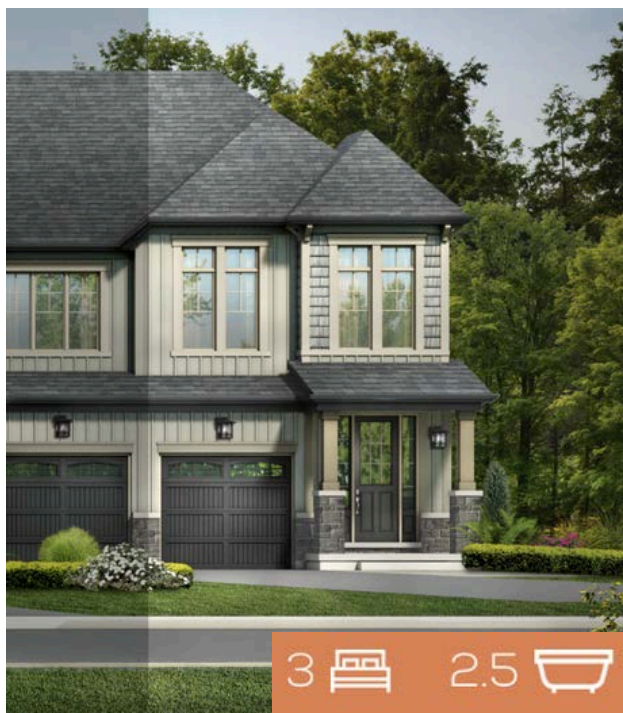
# The Spillsbury

## SOLD

Elevation A

End Unit Townhome

1863 sq.ft.



### INCLUDED UPGRADED FEATURES:

- SMOOTH CEILINGS THROUGHOUT
- 7 1/4" LAMINATE FLOORING ON MAIN LEVEL
- NATURAL FINISH OAK STAIRCASE
- DELUXE KITCHEN CABINETRY WITH TALLER UPPERS
- GRANITE/QUARTZ COUNTERTOPS IN KITCHEN
- SPA-INSPIRED MASTER ENSUITE WITH FREESTANDING SOAKER TUB & QUARTZ COUNTERTOP
- LOOK OUT BASEMENT
- LARGER BASEMENT WINDOWS AT REAR
- APPROX. 5' X 7' DECK OFF MAIN FLOOR WITH STEPS TO GRADE\*



## Flexible Closing Date

[SALES@LIVENATURESEGE.COM](mailto:SALES@LIVENATURESEGE.COM)

705-243-3710

All upgraded features as per plan. See Sales Representative for full details. Prices, terms and conditions subject to change without notice. E & O.E.  
Price includes lot premium. \*Deck size may vary.



**LOT 128-2**  
**145 PIKE STREET**



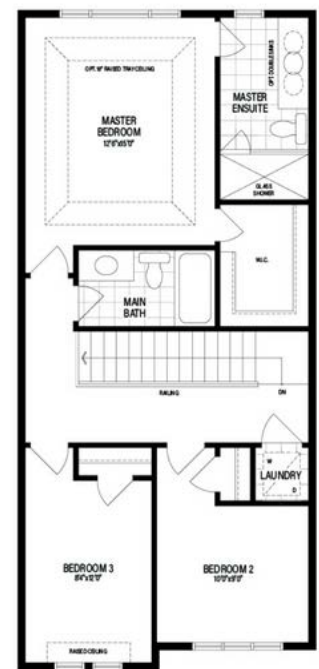
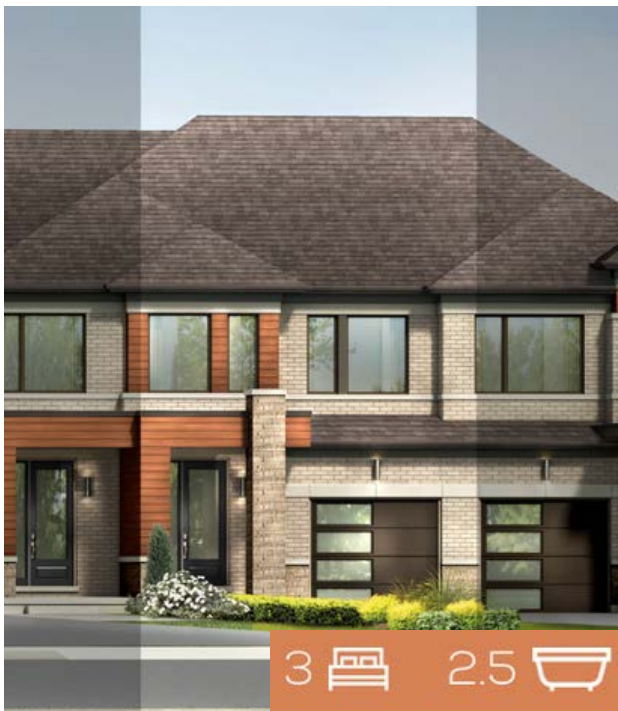
# The Carnegie

**\$632,490**

Elevation C

Interior Townhome

1564 sq.ft.



## INCLUDED UPGRADED FEATURES:

- 9FT CEILINGS ON MAIN FLOOR
- 7 1/4" LAMINATE FLOORING ON MAIN LEVEL
- KITCHEN ISLAND LIGHT CENTERED ON A SEPARATE SWITCH
- 3 LED POT LIGHTS IN KITCHEN
- 4 LED POT LIGHTS IN GREAT ROOM
- DOUBLE BOWL SINK IN MASTER ENSUITE
- 200 AMP SERVICE



**Flexible Closing Date**

**[SALES@LIVENATURESEGE.COM](mailto:SALES@LIVENATURESEGE.COM)**

**705-243-3710**

All upgraded features as per plan. See Sales Representative for full details. Prices, terms and conditions subject to change without notice. E & O.E. \*Hardwood on Main Floor except tiled areas.  
\*Oak Stairs to finished areas only.